



NAFEA
National Association of Field
Experience Administrators inc

NEWS

ISSUE 10 • JULY 2019



WHAT'S ON

**NAFEA QLD Chapter Round Table:
Communication with Students**

25 September 2019

<https://qut.zoom.us/j/789467755>

2019 NAFEA Conference

20 - 22 November 2019

Toowoomba, QLD

NAFEA
NEWSLETTER

TABLE OF CONTENTS

.....

What's On • P. 1

Follow Us • P. 1

President's Message • P. 2

Bank First Offer • P. 3

2019 Conference • P. 3

FOLLOW US

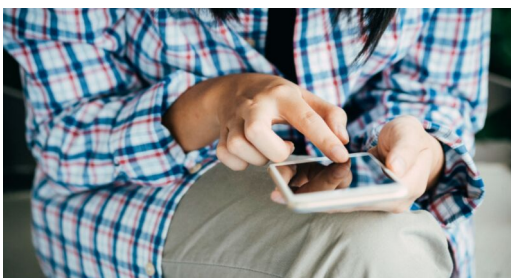
If you would like to keep up to date with the latest developments or get more involved with the Association you can do so by following us on Facebook and now also on LinkedIn.

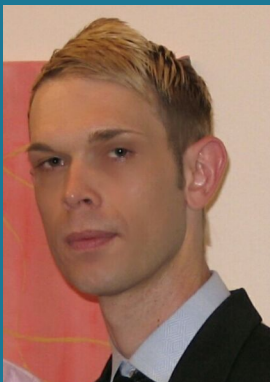
NAFEA financial members can request access to the members only section:
<https://www.linkedin.com/groups/13725200/>.

Linked  TM



Find us on
Facebook





THE PRESIDENT'S MESSAGE

DR RICKY TUNNY

With half of the year done and dusted and as we charge towards the end of the year, activities related to the 2019 NAFEA Conference have started to ramp-up. Get in now, Early Bird registration closes on the 10 September.

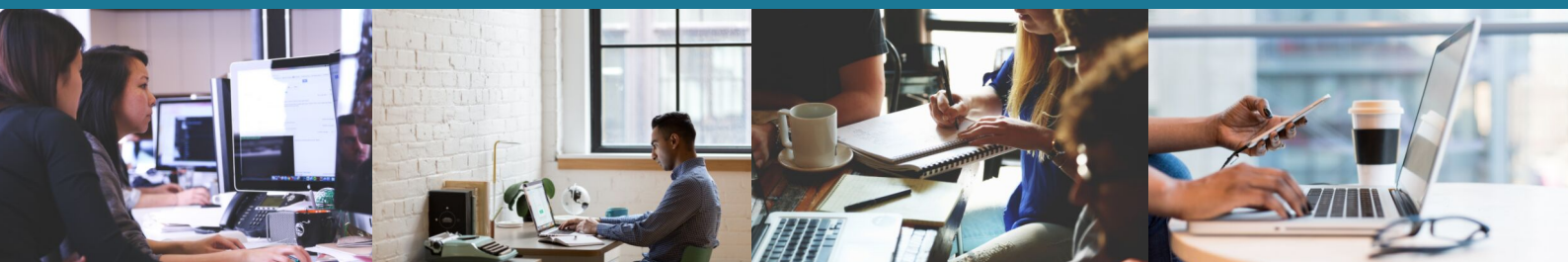
The 2019 conference theme, "Where there's WIL, there's a way", will explore current and future challenges associated with work-Integrated learning (WIL), with a focus on regional, rural and remote WIL, issues related to equity and access, and risk management of WIL. The conference sessions will delve into a broad range of topics related to WIL in the context of the National WIL Strategy, increasing demands for WIL, and the seemingly increasing risks. The conference will provide a forum for practitioners, administrators and other allies across the WIL cycle to discuss strategies, innovations and practices.

NAFEA has also recently announced the opening of the second round of student scholarships for 2019. The scholarship scheme commenced in 2017 and has quickly grown to be the largest scheme of its kind in Australia at the moment. 16 students received a scholarship in the first round and we hope to offer even more in the second round. We are proud to be collaborating with Bank First to offer a number of schemes to our members and students. We hope that the scheme continues to grow to provide funding for regional, rural and remote placements, with particular attention to improving access to students from equity groups. Students need to be from a NAFEA Institutional member university in order to apply. If this isn't enough reason to be an institutional member!

Thanks to our members who completed the Professional Development Program survey. We appreciate your feedback and suggestions so that we can offer you opportunities that meet your professional development needs.

Soon we will be able to announce the recipients of the Project Grant Program, which recently closed. We received a record number of applications, making it a difficult task for the Sub-Committee's selection process. It's encouraging to hear about the exciting and innovative projects that are being proposed. It's also encouraging to have so many members getting involved.

You can get more involved by following us on Facebook and now also on LinkedIn.



Contact NAFEA: contactus@nafea.org.au

*“Where there’s WIL,
there’s a way”*

**2019 NAFEA CONFERENCE REGISTRATION
NOW OPEN**

Toowoomba, Qld

2019 NAFEA Conference

The conference will explore current and future challenges associated with work-Integrated learning (WIL) with a focus on regional, rural and remote WIL and issues related to equity and access to WIL. The conference sessions will focus on a broad range of topics related to WIL in the context of the National WIL Strategy, increasing demands for WIL, and the seemingly increasing risks. The conference will provide a forum for practitioners, administrators and other allies to discuss strategies, innovations and practices.

- Presentations, break-out sessions and workshops are welcomed on the broader theme of the conference as well as related to:
- Access to and administration of regional, rural or remote WIL opportunities;
- Inclusive and innovative practices in delivering or administering WIL;
- Strategies to address challenges of access and inclusion in upscaling WIL;
- Addressing issues of inclusiveness, diversity, and health and well-being of staff, students and supervisors;
- Addressing issues of employability and student labour contributions;
- Risk mitigation and risk management of WIL experiences;
- Facilitating and administering multi-/inter-/trans-disciplinary WIL in innovative and emerging contexts.

Further details of the program will be posted on the NAFEA website and Facebook page as soon as the program is finalised.

Registrations for the conference is available [here](#).

A home loan rate that **puts you first**

Looking to get into the property market sooner? Our First Rate Home Loan will help turn the dream of owning your own home into a reality.

What's included?

- Low variable rate.
- Owner Occupied only.
- Take advantage of free redraw with a \$500 minimum.
- Weekly, fortnightly or monthly repayments.
- No annual package fee.
- Family guarantee available.²

First Rate Home Loan

3.65% | 3.70%¹

Per Annum

Comparison Rate

Variable interest rate. Owner Occupied. LVR of 80% or less.

Visit bankfirst.com.au | Call 1300 654 822

Interest rates effective 21 June 2019 and subject to change. Check website for current rates. The First Rate Home Loan is available to new owner-occupier principal & interest variable rate loans of \$150,000 or more. Conditions apply. 1. Comparison rate calculated on a secured loan amount of \$150,000 for a term of 25 years. WARNING: This comparison rate is true only for the examples given and may not include all fees and charges. Different terms, fees and other loan amounts might result in a different comparison rate. Fees and charges apply. Terms and Conditions available upon request. 2. Subject to approval and conditions apply. Fees and charges apply. Victoria Teachers Limited ABN 44 087 651 769, AFSL/Australian Credit Licence Number 240 960.

 **bankfirst**
invested in you