



NAFEA
National Association of Field
Experience Administrators inc

NEWS

ISSUE 14 • AUGUST 2020

UPCOMING EVENTS

NAFEA QLD State Chapter Meeting

Wednesday, 9 September 2020

11:00 AM-12:30 PM

Zoom Link:



<https://qut.zoom.us/j/98601448151>

Beyond 2020 and COVID-19: The Road to Recovery

Webinar series

16-20 November 2020

www.nafea.org.au



NAFEA
NEWSLETTER

TABLE OF CONTENTS



Upcoming Events • P. 1

Follow Us • P. 1

President's Message • P. 2

Spotlight - NAFEA Project Grant Program – Resources for International Students and Industry Partners to facilitate success in Work Integrated Learning programs. • P. 3

FOLLOW US

If you would like to keep up to date with the latest developments or get more involved with the Association you can do so by following us on Facebook and now also on LinkedIn.

NAFEA financial members can request access to the members only section:

<https://www.linkedin.com/groups/13725200/>



Find us on
Facebook



THE PRESIDENT'S MESSAGE

DR RICKY TUNNY

2020 continues to present many challenges for us all. To support NAFEA members, NAFEA continues to offer webinars and State Chapter meetings so that these challenges can be shared and explored. Many of the discussions have focussed on the various strategies being implemented to continue to offer work-integrated learning experiences to students. I encourage members to continue engaging with these opportunities. At the very least, there is some comfort in knowing that you are not alone in this pandemic.

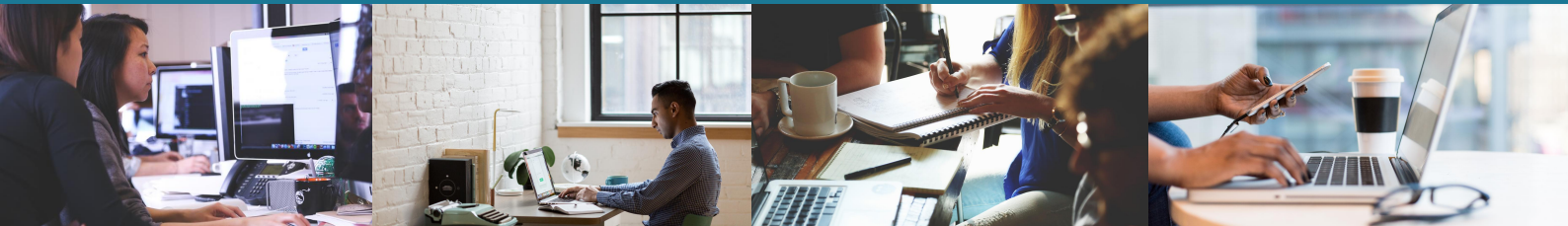
Further opportunities to share and explore these challenges will continue during our 2020 webinar series, Beyond 2020 and COVID-19: The Road to Recovery. The webinar series will run from 16-20 November 2020 and will focus on COVID-19 recovery processes and challenges. Members are encouraged to facilitate a session to share their practices, strategies, innovations and experiences with other members. If you are interested in facilitating a session, please see our website for more information. Presentations, break-out sessions and workshops are welcomed on the broader theme of the webinar series as well as related to general break-out sessions for the following disciplines:

- Allied Health
- Architecture, Engineering and IT
- Business
- Creative Arts
- Dentistry
- Education
- Humanities, Society and Culture
- Law
- Medicine
- Natural and Physical Sciences, Agriculture and Environmental Science
- Nursing

I'd also like to welcome the new NAFEA Executive Committee who were voted in at the 2020 AGM on the 23 June. I'd particularly like to welcome the new Executive Members Meagan Crabb, Jackson Harnwell and Yvonne Thursby. I look forward to working with you all to continue the great work that has been undertaken by NAFEA.

- President: Ricky Tunny
- Vice-President: Jackson Harnwell
- Secretary: Meagan Crabb
- Treasurer: Imogen White
- Web Administrator: Laura Zubair
- Conference Convenor: Yvonne Thursby
- Sponsorship and Marketing Manager: Katherine Theobald
- Scholarships Manager: Danielle Waid
- Professional Development Manager: Wendy Harris
- Research and Project Manager: Ondine Bradbury

We hope to see many of you online at one of our webinars (and hopefully in the not too distant future we will be able to meet again face-to-face). Stay safe, healthy and be kind to one another!



SPOTLIGHT – NAFEA PROJECT GRANT PROGRAM

Title of the project: Engaging La Trobe University International Students – Resources for Students and Industry Partners to facilitate success in Work Integrated Learning programs.

Research Team: Dr Colleen Holt, Kelly McDermott, Rachael Baron and Rana Bishwas

This spotlight showcases a collaboration between academic and professional staff in the Work Integrated Learning (WIL) space at La Trobe University. This 2019 NAFEA-funded project aimed to design, produce and provide a range of resources in order to improve the quality of the WIL experience for international students and industry partners hosting international students.

Colleen, Kelly, Rachael and Rana contributed to this project from within their varying roles at the university. This allowed for "practical, practitioner and academic input" which by their own admission ensured that a variety of different perspectives were considered. With a wealth of knowledge between them around the student experience, Colleen and the team set about creating an in-depth analysis of the gaps and the opportunities within the WIL student lifecycle in the La Trobe community. Their research into this space uncovered the need to provide additional support to international students, and to the industry partners that support these students, on their work integrated learning journeys. The benefit that international students provide to industry partners was a story worth telling and the journey to develop the supporting resources began.

The NAFEA grant enabled Colleen, Kelly, Rachael and Rana to work closely together in order to produce a 'slick' suite of flyers and informational resources. Each project member "tackled a different part" of the resource development along with conducting "extensive consultation" with key internal stakeholders. The resources ranged from a checklist to support students in self-sourcing industry placements, to a flyer for students outlining the benefit of completing WIL in a higher education context. These flyers are to be included in orientation packs for students at the commencement of their studies to support greater understanding of employability. These resources have been approved and are in the process of publication. A guide for industry partners on the benefit of engaging international students has also been produced after extensive consultation with industry partners. The research team were able to acquire International Education Association of Australia (IEAA) approval as well as "road-testing it on a number of our industry partners who loved it and who used it".

Rachael and Kelly reflected on their 'top tips' for future NAFEA grant applicants. First and foremost, emphasising how their team benefited from multiple perspectives as their various roles encompass "the academic perspective...the university central employability WIL perspective, and both college perspectives". Within this diversity, the project team highlighted the importance of clearly defined roles, with one project member keeping the team on track, following up on key objectives and keeping the project "rolling". One final key component the team advises is to focus the project outcomes back to a core practice in your context; at La Trobe, this was around "providing a quality student experience". This enabled the project team to receive support from staff beyond the project and in turn, increased the likelihood of the end product impacting a broader stakeholder group.

NAFEA would like to extend our congratulations to the project team at La Trobe for their efforts in bringing these important issues around WIL to the forefront of our conversations. We look forward to hearing about how these resources continue to develop for both students and industry partners.

